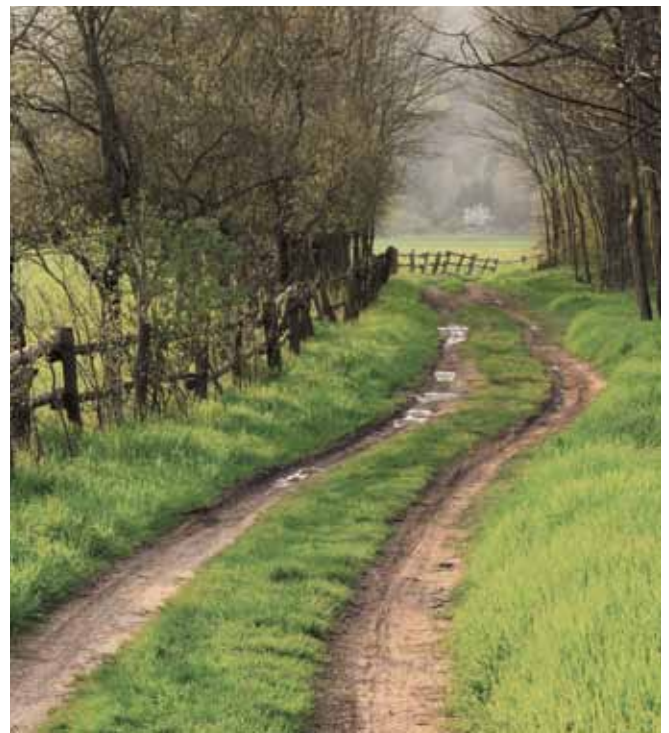




Stockton 8 Double flat top in Matt Black burning logs.



STEEL

Stockton Double Sided

Enjoy twice the comfort and twice the view of your fire with a Stockton double sided stove. Using one central chimney, the doors to both the back and the front of the stove are designed to open into adjacent rooms. So, compared to individual stoves in each room, you have less work refuelling and even more of a focal point to your home.

There are two sizes of stove from which to choose – Stockton 8 Double and Stockton 11 Double. Although this double sided configuration does not allow the incorporation of full Cleanburn technology both stoves still include an airwash system to keep the glass clean. The smaller Stockton 8 Double will provide you with a significant heat output, up to 9kW, whilst the Stockton 11 Double produces an even more powerful 11kW. Otherwise, the two models have exactly the same specifications as their single sided equivalents.

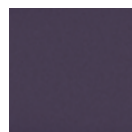
Key Facts	8 Double	11 Double
High efficiency	up to 73%	up to 77%
Multi-fuel kit	✓	✓
Wood	✓	✓
Airwash	✓	✓
Maximum heat output	9kW	11kW
Maximum log length	15 3/4" (400mm)	19 3/4" (500mm)
Boiler option	✗	✗
Flue outlet	6" top	6" top
Choice of four colours	✓	✓

Product Codes

Colour	Matt Black	Metallic Blue	Metallic Brown	Metallic Green
8 Double wood - flat top	7113SD	7113SDBL	7113SDBR	7113SDGR
8 Double wood - high canopy	7113SDHC	7113SDHCBL	7113SDHCBR	7113SDHCGR
Multi-fuel kit	7111SDCE all models			
Sparkguard	7228 all models			
11 Double wood - flat top	7116SD	7116SDBL	7116SDBR	7116SDGR
11 Double wood - high canopy	7116SDHC	7116SDHCBL	7116SDHCBR	7116SDHCGR
Multi-fuel kit	7112SDCE all models			
Sparkguard	7221 all models			



Matt Black



Metallic Blue



Metallic Brown



Metallic Green



Steel stoves

Wood and multi-fuel

Using cast iron for the airtight doors and main firebox components and heavy gauge steel for the body, the Stovax Stockton and View stove ranges combine the advantages of both steel and cast iron to produce exceptional performance, control over combustion and value for money.

Stockton Stoves

With eight sizes, each available in four colours, and some models having a further choice of door styles and canopies, there is a Stockton stove to suit any home. Furthermore, there are inset versions, double sided versions and even boiler versions, so whether traditional or modern, large or small, in country or town, burning wood or solid fuel you should find a Stockton to match your setting.

View Stoves

The View stoves are the latest additions to the Stovax ranges. Available in a choice of three freestanding sizes and an Inset version, the View offers high efficiency heating in ultimate style - perfect for more contemporary homes! You can even achieve whole house heating if you opt for View 7 Inset or View 8 High Output boiler versions, with the capability of supplying up to nine radiators as well as providing a cosy warmth to the room in which they are situated.



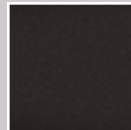
Stockton 6



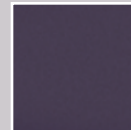
View 5



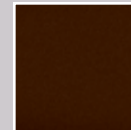
Stockton Colour Options



Matt Black



Metallic Blue

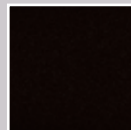


Metallic Brown



Metallic Green

View Colour



Midnight Black Metallic

Design Features

- 1 5mm heavy duty steel body.
- 2 Cast iron airtight door with primary air control lever.
- 3 Cast iron fireback incorporating heat exchanger for Cleanburn system.
- 4 Heated air jets from Cleanburn ports burn hydrocarbons in smoke.
- 5 Airwash control lever to maintain a cleaner glass window.
- 6 Riddling (multi-fuel versions).
- 7 Top or rear flue exit connecting to stove flue pipe.
- 8 Firebrick lining.
- 9 Specially developed, inset boiler versions of Stockton and View also available (not illustrated).
- 10 Universal tool (not illustrated).
This fits over the stove handle to provide additional leverage and easier usage when the handle is hot.
- 11 Cleanburn air control ports (not illustrated).
These are on the rear of the stove and pre-set in the factory.
- 12 Optional smoke control kit (not illustrated) available on most models to allow them to be used in smoke control areas.

