



# STEEL

## Stockton 3

The mini stove of the Stockton range is specifically designed to fit neatly into a standard 22" (560mm) high x 16" (405mm) wide British fireplace opening with the chairbrick removed. It has full multi-fuel capability and its compact dimensions make this stove equally suitable for houseboats, summerhouses and garden workshops.

### Key Facts

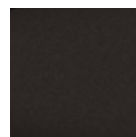
High efficiency	up to 86%
Multi-fuel (with external riddling)	✓
Approved for Smoke Control Areas*	✓
Cleanburn	✓
Airwash	✓
Flat top	✓
Maximum heat output	3.75kW
Maximum log length	7 7/8" (200mm)
Room vent not normally required**	✓
Boiler option	✗
Flue outlet	5" top or rear
Choice of four colours	✓

\* When fitted with a Smoke Control Kit.

\*\*For more information on room vents, please see page 76

### Product Codes

Colour	Matt Black	Metallic Blue	Metallic Brown	Metallic Green
Multi-fuel	7118	7118BL	7118BR	7118GR
Sparkguard	7223 all models			
Ash Caddy	4227 all models			
Smoke Control Kit	ST3SCKIT all models			



Matt Black



Metallic Blue



Metallic Brown



Metallic Green





# Steel stoves

Wood and multi-fuel

Using cast iron for the airtight doors and main firebox components and heavy gauge steel for the body, the Stovax Stockton and View stove ranges combine the advantages of both steel and cast iron to produce exceptional performance, control over combustion and value for money.

## Stockton Stoves

With eight sizes, each available in four colours, and some models having a further choice of door styles and canopies, there is a Stockton stove to suit any home. Furthermore, there are inset versions, double sided versions and even boiler versions, so whether traditional or modern, large or small, in country or town, burning wood or solid fuel you should find a Stockton to match your setting.

## View Stoves

The View stoves are the latest additions to the Stovax ranges. Available in a choice of three freestanding sizes and an Inset version, the View offers high efficiency heating in ultimate style - perfect for more contemporary homes! You can even achieve whole house heating if you opt for View 7 Inset or View 8 High Output boiler versions, with the capability of supplying up to nine radiators as well as providing a cosy warmth to the room in which they are situated.



Stockton 6



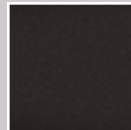
View 5

## Stunning flame effects due to Cleanburn technology

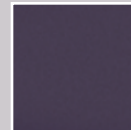
The triple air systems incorporated in Stockton and View stoves combine to provide superb flame control and exceptional views of the fire, so you can also create different ambiances to suit your mood. From a deep glow, with minimal flames, it takes only a few seconds to fill the firebox with swirling flames.



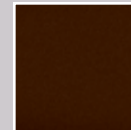
### Stockton Colour Options



Matt Black



Metallic Blue

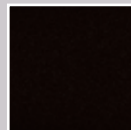


Metallic Brown



Metallic Green

### View Colour



Midnight Black Metallic

## Design Features

- 1 5mm heavy duty steel body.
- 2 Cast iron airtight door with primary air control lever.
- 3 Cast iron fireback incorporating heat exchanger for Cleanburn system.
- 4 Heated air jets from Cleanburn ports burn hydrocarbons in smoke.
- 5 Airwash control lever to maintain a cleaner glass window.
- 6 Riddling (multi-fuel versions).
- 7 Top or rear flue exit connecting to stove flue pipe.
- 8 Firebrick lining.
- 9 Specially developed, inset boiler versions of Stockton and View also available (not illustrated).
- 10 Universal tool (not illustrated). This fits over the stove handle to provide additional leverage and easier usage when the handle is hot.
- 11 Cleanburn air control ports (not illustrated). These are on the rear of the stove and pre-set in the factory.
- 12 Optional smoke control kit (not illustrated) available on most models to allow them to be used in smoke control areas.

